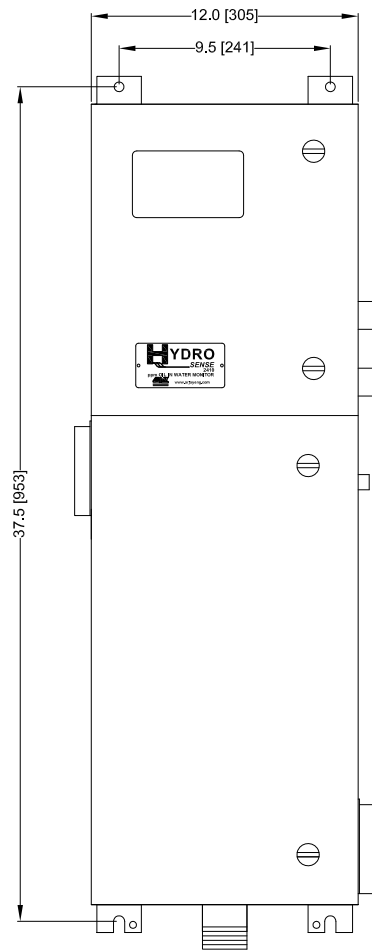
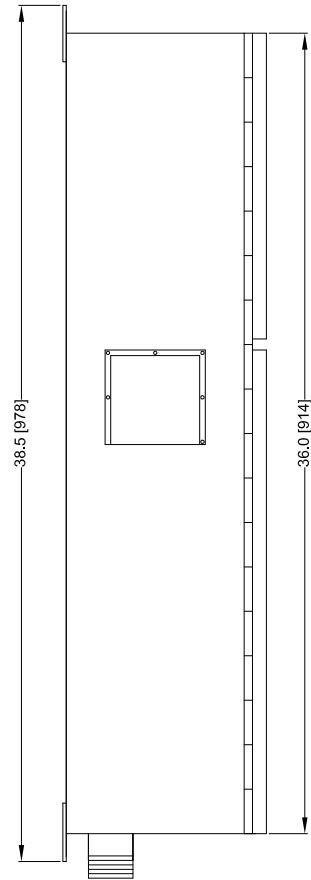


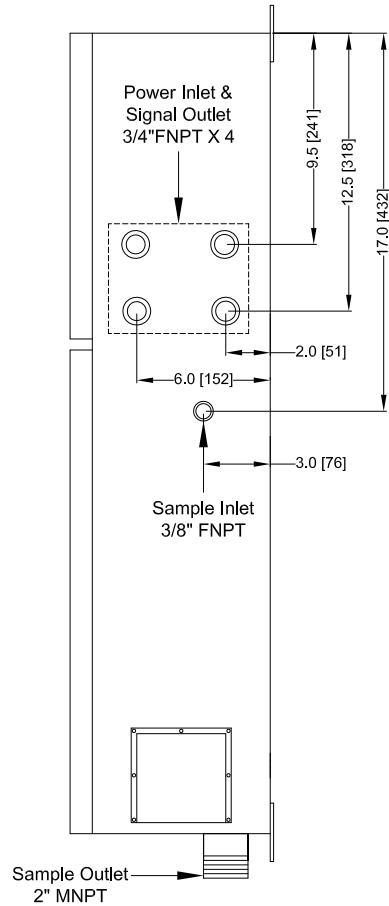
FRONT VIEW



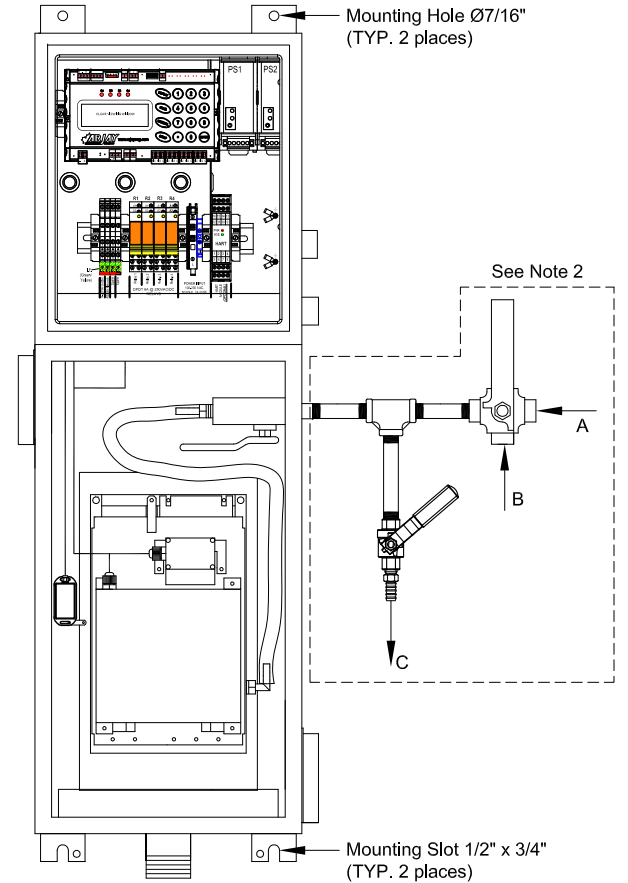
LEFT SIDE VIEW



RIGHT SIDE VIEW



FRONT VIEW WITHOUT DOOR



GENERAL NOTES:

1. All dimensions are in inches and [mm].
2. 3 Way Valve with grab sample take off valve supplied loose.
 - A: Process Sample Inlet 3/8" FNPT
 - B: Clean Water Inlet 3/8" FNPT for Test and Calibration.
 - C: Sample take off point for laboratory analysis.

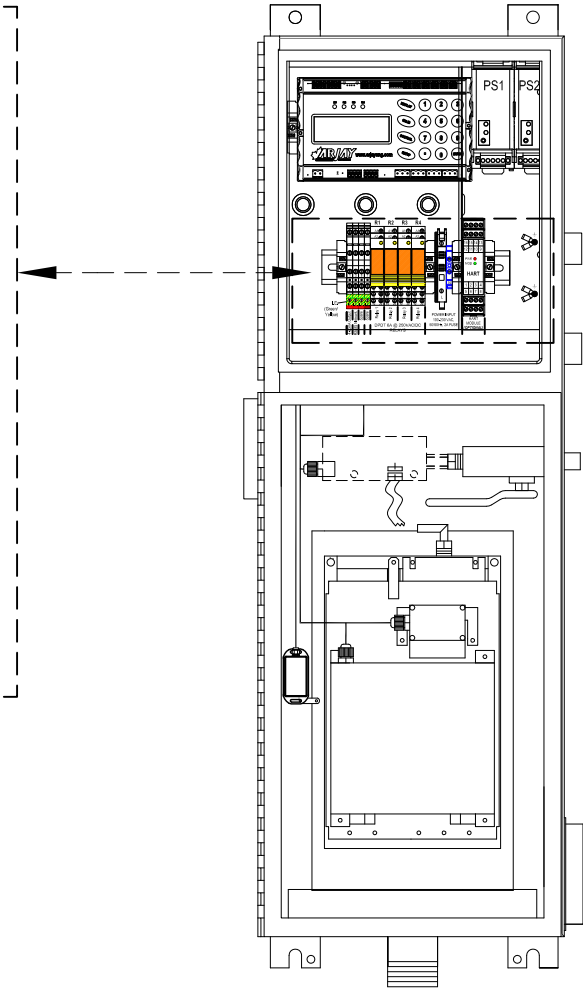
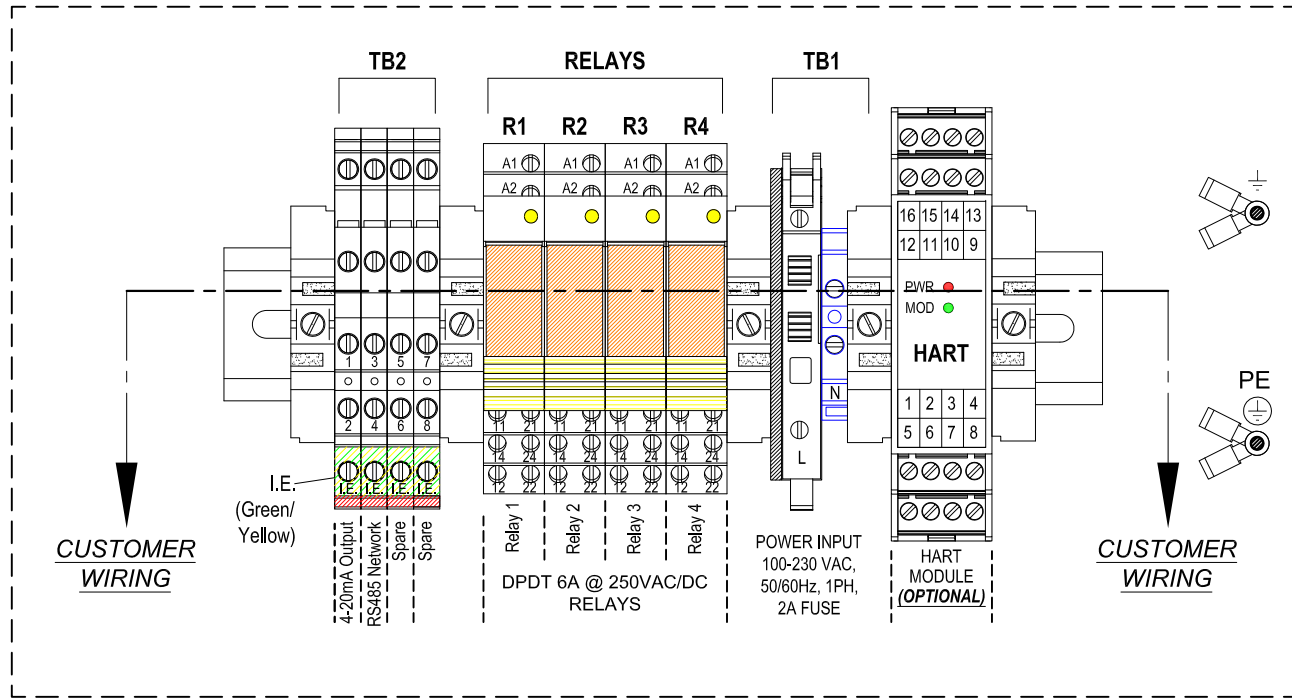
| REV | DATE | DESCRIPTION | CHK'D | APP'D |
|-----|----------|-------------|-------|-------|
| 3 | 03/08/17 | REVISED | | |
| 2 | 19/04/16 | REVISED | | |
| 1 | 11/12/15 | REVISED | | |

REVISIONS

**ARJAY
ENGINEERING
LIMITED**

PROJECT

| | | | | |
|-------------|------------|----------|--|-----------|
| DWG. STATUS | BY | DATE | TITLE | |
| | F.H. | 06 10 15 | HS4410-LMP (VENTED-VAC) SYSTEM OVERVIEW | |
| CHECKED | | | | |
| APPROVED | | | | |
| SCALE | REF. DWGS. | DWG. NO. | | SHT. REV. |
| N.T.S. | | 20150470 | | 1 3 |



| TERMINAL BLOCK 1 (TB1) | | |
|------------------------|----------------------|--|
| TERMINAL NO. | TERMINAL DESCRIPTION | USE FOR |
| 1 | L | 100 - 230VAC (85-264VAC)*, 50/60Hz (47-63Hz)*, 1.26A - 0.62A, 1PH, 2A Fuse |
| 2 | N | |

* Operation Range

| TERMINAL BLOCK 2 (TB2) | | |
|------------------------|----------------------|-----------------|
| TERMINAL NO. | TERMINAL DESCRIPTION | USE FOR |
| 1 | + | 4-20mA OUTPUT |
| 2 | - | 900Ω Isolated |
| 3 | + | RS485 MODBUS |
| 4 | - | |
| 5 - 8 | SPARE | SPARE TERMINALS |


| DPDT 6A @ 250VAC/DC RELAYS (R1, R2, R3 AND R4) | | |
|--|----------------------|--|
| TERMINAL MARKING | TERMINAL DESCRIPTION | USE FOR |
| 11 / 21 | COM | MAINTENANCE ALARM, CONTROLLER OR LAMP FAILURE, HIGH PPM LEVEL ETC. |
| 14 / 24 | NO | |
| 12 / 22 | NC | |

WHERE:
R1: USER SETTABLE SETPOINT ALARM RELAY.
R2: USER SETTABLE SETPOINT ALARM RELAY.
R3: MAINTENANCE ALARM
R4: FAULT ALARM

| HART TERMINAL - OPTIONAL | | |
|---------------------------------|----------------------|---------------------------------|
| TERMINAL NO. | TERMINAL DESCRIPTION | USE FOR |
| 1 | + | HART PROTOCOL (OPTIONAL) |
| 2 | - | |
| 3 | SHIELD | |

| REV | DATE | DESCRIPTION | CHK'D | APP'D |
|-----|----------|-------------|-------|-------|
| 3 | 03/08/17 | REVISED. | | |
| 2 | 19/04/16 | REVISED. | | |
| 1 | 11/12/15 | REVISED | | |

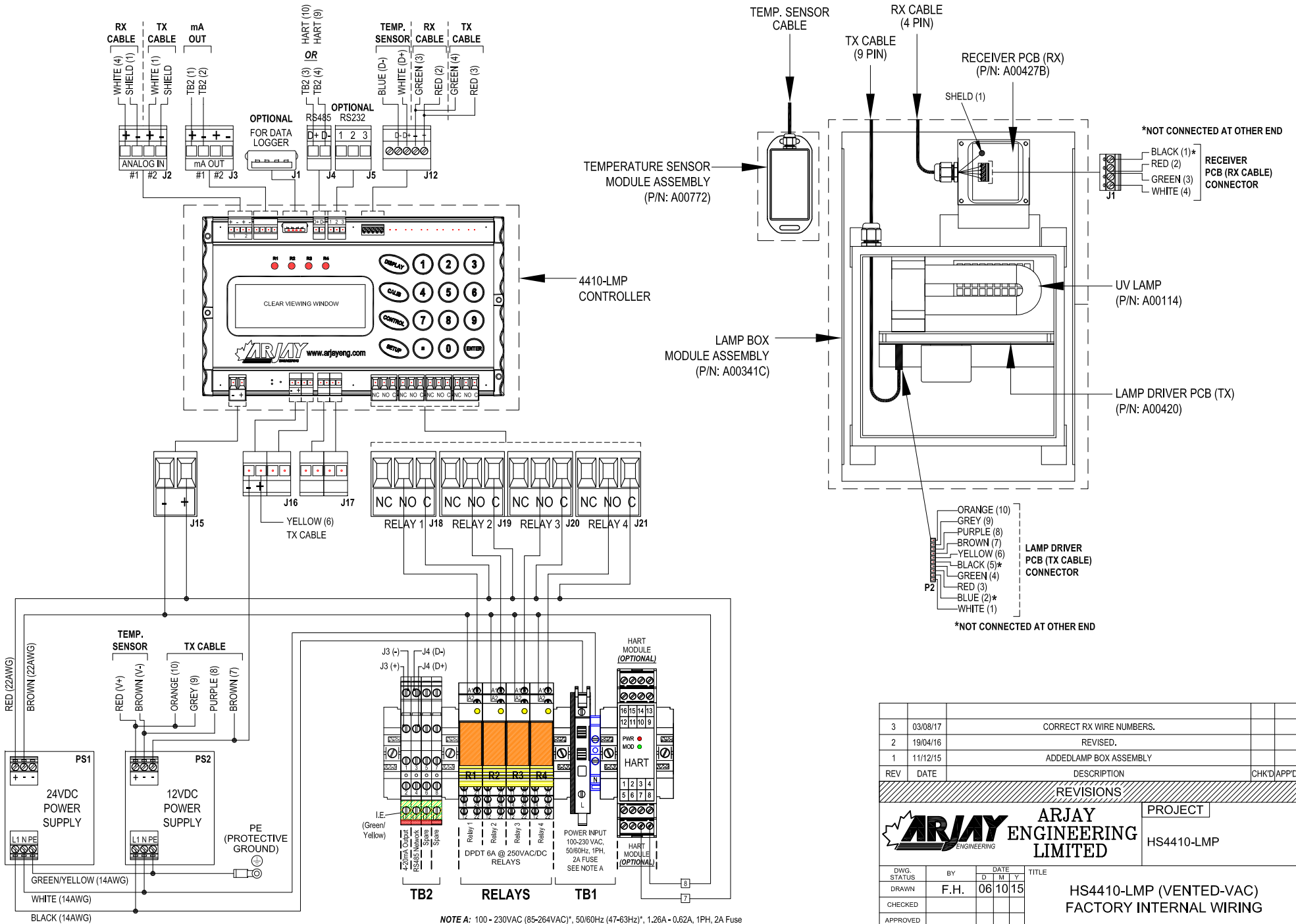
REVISIONS



ARJAY ENGINEERING LIMITED

PROJECT

| | | | |
|-------------|------------|----------|---|
| DWG. STATUS | BY | DATE | TITLE |
| DRAWN | F.H. | 06 10 15 | HS4410-LMP (VENTED-VAC) ELECTRICAL OVERVIEW |
| CHECKED | | | |
| APPROVED | | | |
| SCALE | REF. DWGS. | DWG. NO. | SHT. REV. |
| N.T.S. | | 20150471 | 1 3 |



NOTE A: 100 - 230VAC (85-264VAC)*, 50/60Hz (47-63Hz)*, 1.26A - 0.62A, 1PH, 2A Fuse
 * Operation Range

| 3 | 03/08/17 | CORRECT RX WIRE NUMBERS. | | |
|----------------------------------|------------|--------------------------|--|-------|
| 2 | 19/04/16 | REVISED. | | |
| 1 | 11/12/15 | ADDED LAMP BOX ASSEMBLY | | |
| REV | DATE | DESCRIPTION | CHK'D | APP'D |
| REVISIONS | | | | |
| ARJAY ENGINEERING LIMITED | | PROJECT | | |
| | | HS4410-LMP | | |
| DWG. STATUS | BY | DATE | TITLE | |
| | F.H. | 06 10 15 | HS4410-LMP (VENTED-VAC) FACTORY INTERNAL WIRING | |
| CHECKED | | | | |
| APPROVED | | | | |
| SCALE | REF. DWGS. | DWG. NO. | SHT. | REV. |
| N.T.S. | | 20150472 | 1 | 3 |