

TOKHEIM
ProGauge

Environmental and wetstock
management solutions



TOKHEIM
ProGauge

Tokheim ProGauge
Via Pola, 6
20813 Bovisio Masciago (MB)
Italy
www.tokheimprogauge.com

MAGLINK LX
Filling stations
and fuel depots
management



MAGLINK LX

“Link the world”

Main features

- Web access and WI-FI connection
- IFSF compliance
- Colour resistive touch-screen TFT 7" display
- Manages up to 32 tanks
- Event recording up to 32 Gb with removable micro-SD card
- Safe and easy programming via web based interface
- Full color graphical display showing:
 - product level in mm
 - real volume and compensated at 15 °C in litres
 - interface measure in mm (water detection)
 - product mean temperature
 - volume of empty portion of tank in litres (Ullage)
 - Fuel Quality sensor (Density, Viscosity, Dielectric)
 - alarm signals, unit of measure
- Tank strapping table stored in NV RAM up to 500 points
- Integrated communication protocols including: Tokheim, Gilbarco, Dresser Wayne, Retalix, Orpak, DOMS
- Leak detection, automatic reconciliation, deliveries, trends, historical events / alarms recording
- Inches/Gallons option

Technical characteristics

- Microprocessor:
 - CPU: Cortex ARM A8 @ 600Mhz
 - Memory: 256 MB DDR2
 - Storage: 512 MB NAND Flash
- Power Supply 230 Vac - Real Time Clock
- GSM/GPRS, Radio wireless
- No 04 low power programmable relays
- No 06 digital /analog inputs
- RS485 - RS232
- Ethernet port
- USB device
- Can-bus port
- Active or passive integrated Intrinsically safe barriers
- Synthetic resin enclosure IP40 protection



Up to 256 Mb RAM

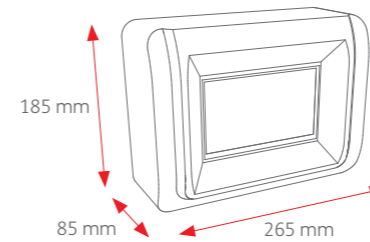


High quality color TFT 7" display
Touchscreen

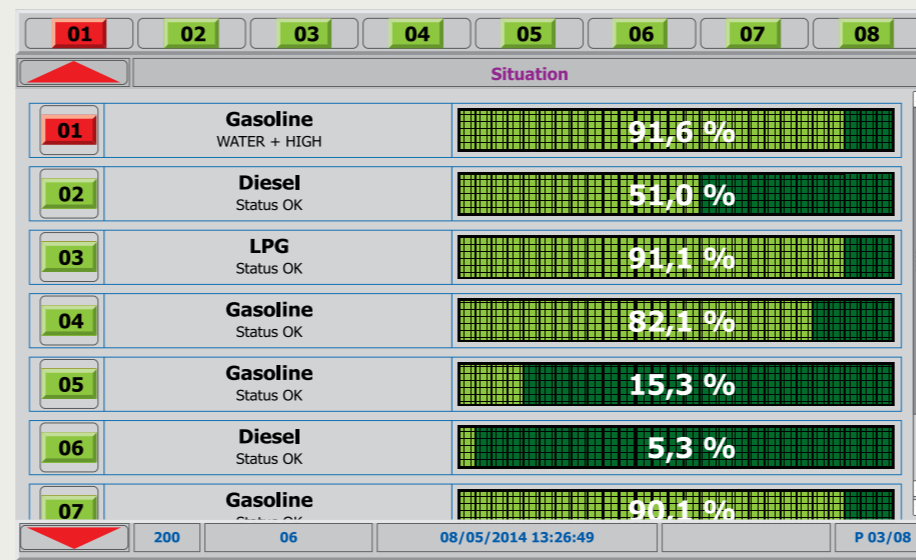
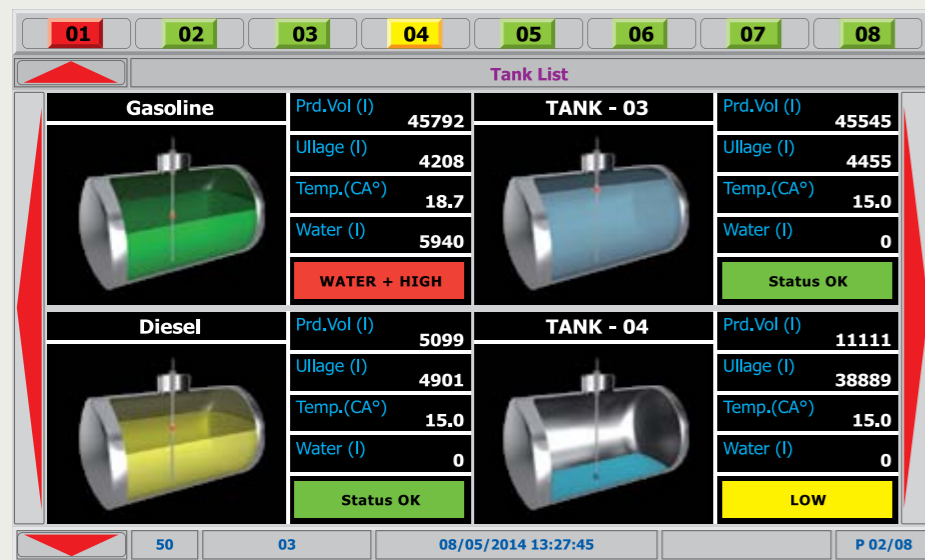


Ethernet and legacy systems supported

TOTAL CONNECTION



MAGLINK LX



Certifications

Complete system certification (probe+console+barrier)

CEC 12 ATEX 028 II 1 G Ex ia IIB T4 Ga
 II 1D Ex t IIIC T135 °C Da IP66/68

Intrinsically safe barrier ATEX certification

BRA-SIP / BRA-2SIP:

CEC 10 ATEX 025 Rev. 3 II (1) G [Exia] IIB
FISCO Power Supply U_m = 250 V [Exia] IIB

BRA-SI:

CEC 10 ATEX 025 Rev. 3 II (1) G [Exia] IIB
FISCO Power Supply U_m = 400 V [Exia] IIB