

The **WATERLOG[®]** H-335 is a precision, single axis, wide range inclinometer which measures the angle (position) of radial water control gates. The H-335 is easy to use, works with any SDI-12 data recorder and can be interfaced with SCADA systems.

KEY FEATURES

- Easily attaches to I-beam of gate structure
- Scales gate position into user units of feet, inches, meters, etc.
- Built in intelligence automatically calculates both gate height and arc length
- SDI-12 digital interface supports multiple sensors on a simple three wire cable.
- No hysteresis or backlash
- 0.03^E Accuracy over full position and temperature range.
- Sealed water-tight enclosure
- No moving parts or bearings
- Low system cost

APPLICATIONS

- Gravity referenced sensor allows installation anywhere on the gate Structure (does not need to be on the center of the gates rotating axis)
- Easy to install, includes heavy duty mounting plate and 2 inch galvanized steel beam clamps
- Eliminates shaft encoders, gears, chains and other non-linear measurement schemes



SPECIFICATIONS

General

Sensor: ceramic, single axis, linear, wide angle
Type: electrolytic fluid
Range: -40E to +40E (80E total)
Resolution: 0.005E
Accuracy: +0.03E (absolute over full range)
(0.25 inch gate height with 36' gate radius)
(0.13 inch gate height with 20' gate radius)
Offset Adjust: software command with gate against sill
Temperature: -30E to +50 EC (calibrated range)
Settling Time: <300ms
SDI-12 Measurement Time: 2 Sec

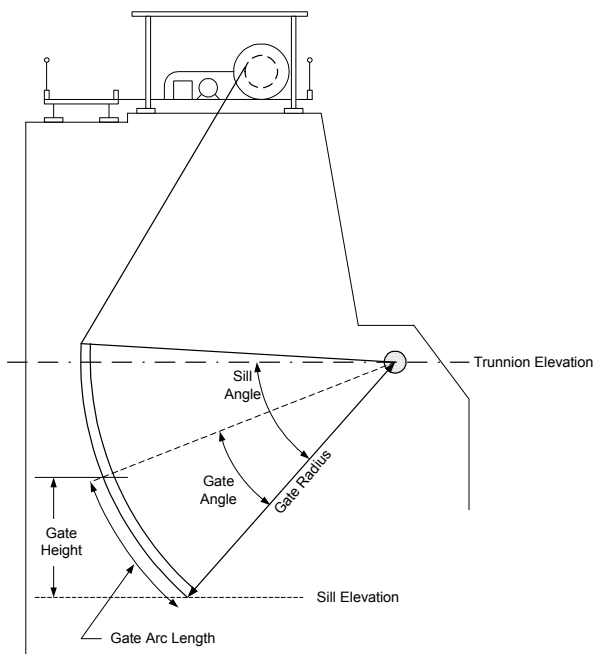
SDI-12 Output

Baud Rate: 1200
Protocol: SDI-12, 7-bit even parity,
1 stop bit

Output Voltage Levels:
minimum high level: 3.5 volts
maximum low level: 0.8 volts
maximum cable length: 250 ft.

SDI-12 Output Data Parameters:

- 1 - Gate Arc Length (feet, inches, meters, etc.)
- 2 - Gate Height (feet, inches, meters etc.)
- 3 - Gate Angle (degrees)
- 4 - Temperature (EC)



Gate Geometry

Power Requirements

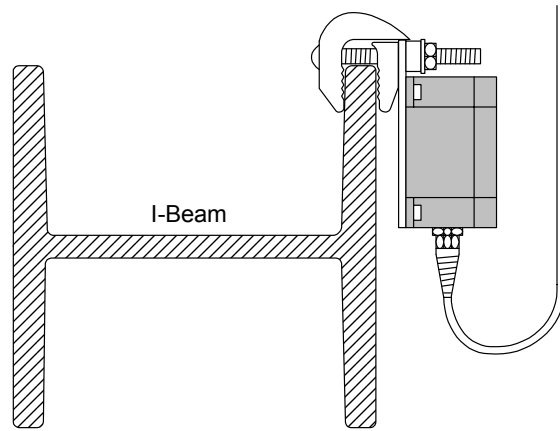
Voltage Input: 10.0 to 16.0 Volts DC
Current
Measuring: 30 mA
Standby: 20 typical

Environmental

Operating Temperature: -30E to +60EC
Storage Temperature: -50E to +70EC

Mechanical

Material: 40% graphite filled fiberglass
Size: 4.76" x 4.76" x 2.5" high
Rating: NEMA 4X, 6
Connector: liquid tight strain relief fitting
.08" to .24" dia cable
Beam Clamp: 2-Inch max I-beam thickness
Cable: not included
Recommended Cable: polyurethane or similar, rated for water immersion and sunlight resistance.



H-335 Mounted on a steel I-beam

Warranty

WATERLOG® H-335 is warranted against defects in materials and workmanship for one year from date of shipment.

Note: Specifications subject to change without prior notice due to on going commitment to product testing and improvement.

September 1, 2000

Australian Distributor:

Semrad Pty Ltd

Phone: +61 2 9520 0222

Fax: +61 2 9520 1333

Website: <http://www.semrad.com.au>

Sales: sales@semrad.com.au